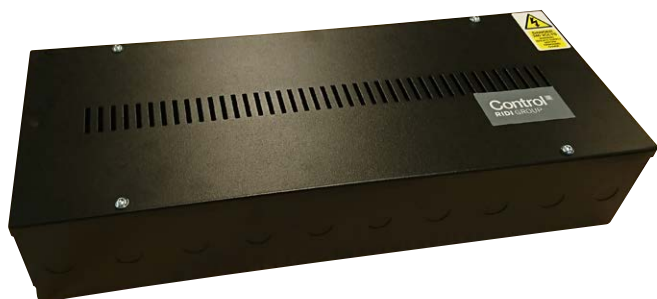


Protection class: IP20

Product Image



Description

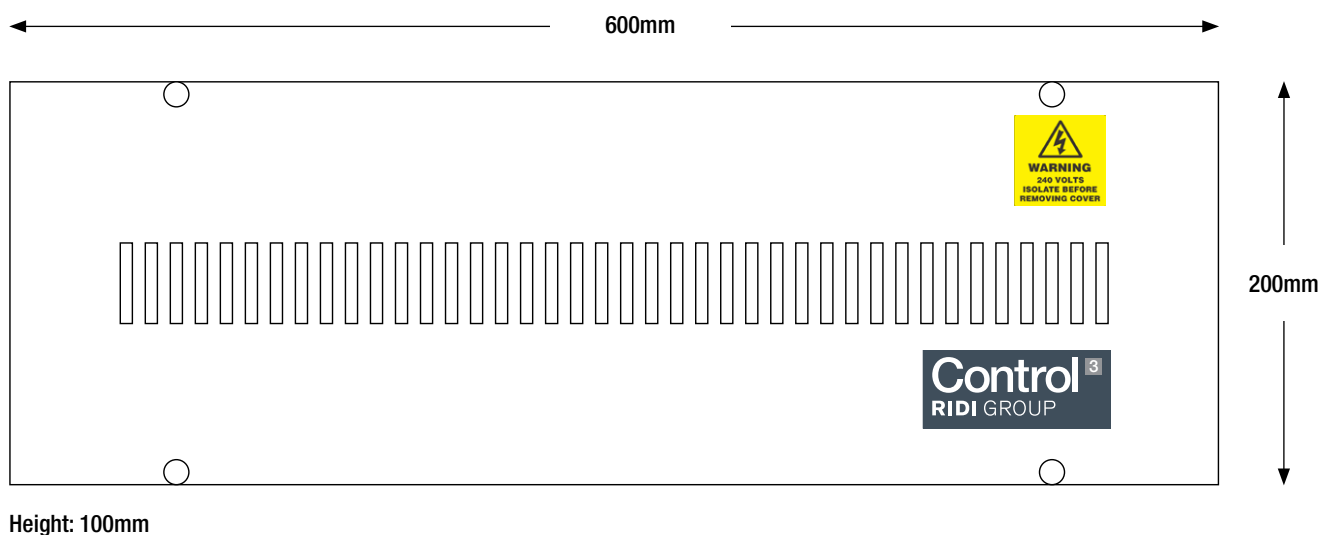
Enclosure for Control3 systems. Supplied pre-wired with Control3 system components to form a complete system.

Capacity for up to 8 DALI circuits (97-C3-SCI2), one Control3 Processor (97-C3-CPU) and power supply (97-C3-PSU).

Additional DIN rail components may be fitted depending on available space.

Ten 20mm diameter knockouts are available on the top and bottom surface.

Dimensions



Part Numbers	Description
97-C3-ENC-(1-8)	Fully Populated Control3 system with PSU, Controller and (1-8) DALI circuits - pre-wired.
97-SW-ENC-X	Unpopulated enclosure for use with DIN rail control components